

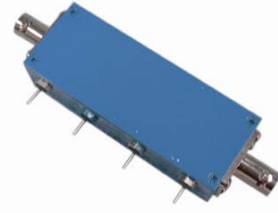


UNIVERSAL COOPERATE LTD.

**Model** UCL-PA2-3-40-1-D(75)

**Programmable Attenuator**

**2 Watts DC-1GHz**



Model Number	Frequency Range (GHz)	Attenuation Range (dB)	Attenuation Step (dB)	Max VSWR	Insertion Loss (dB)	Attenuation Accuracy (dB)		
						≤10	20	30
UCL-PA2-3-40-1-D(75)	DC-1	40/10	10,10,20	1.25	≤1	±0.3	±0.5	/

Note: XX refer to attenuation value in dB

Programmable attenuators are generally used to control power level of microwave signals by volts control or computer programmable auto control manner. They are small with high accuracy and high stability etc.

UCL-PA2-3-40-1-D(75) programmable attenuators' average power 2W, frequency range from DC-1GHz, attenuation value 0-40dB by 10dB step. MCU-drive circuit could be designed to control programmable attenuator according to Customer's demand.

**NOMINAL IMPEDANCE:** 75Ω

**CONTROL VOLTAGE:**

12V(TTL Controlled with driver circuit)(Currents≤100mA)

**AVERAGE POWER:** 2W

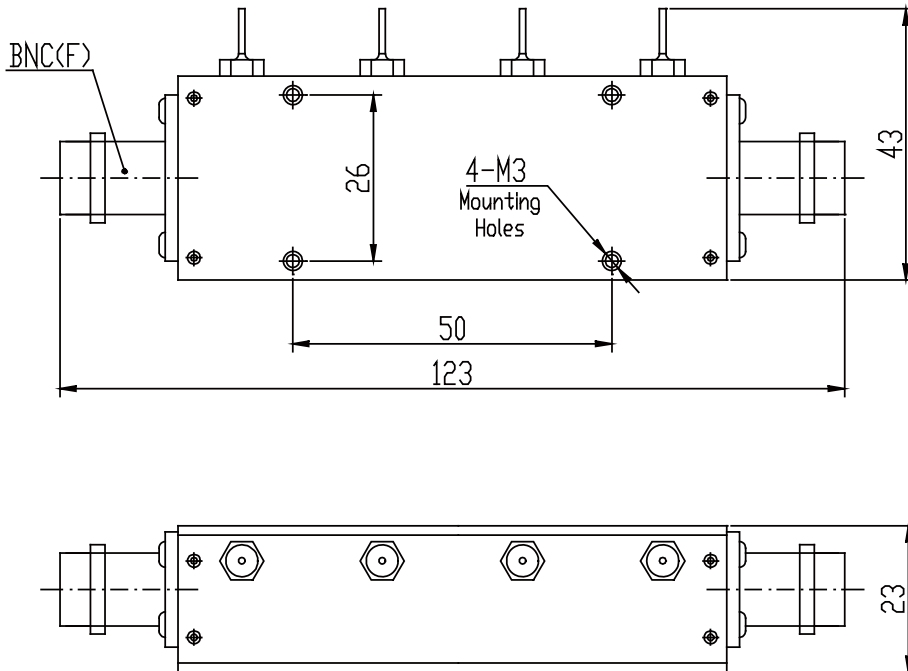
**TEMPERATURE RANGE:** -55°C~+75°C

**CONNECTOR TYPE:** N(F,F),BNC(F,F)

**WEIGHT:** 125g

**PHYSICAL DIMENSIONS:** 123×43×23mm

**Outline Drawings**



\* Dimensions are given in mm and tolerance ±2%.

\*\* VSWR varies according to frequency and attenuation value.