



UNIVERSAL COOPERATE LTD.



Model UCL-WIT50
Inset Termination
50 Watts DC-18GHz

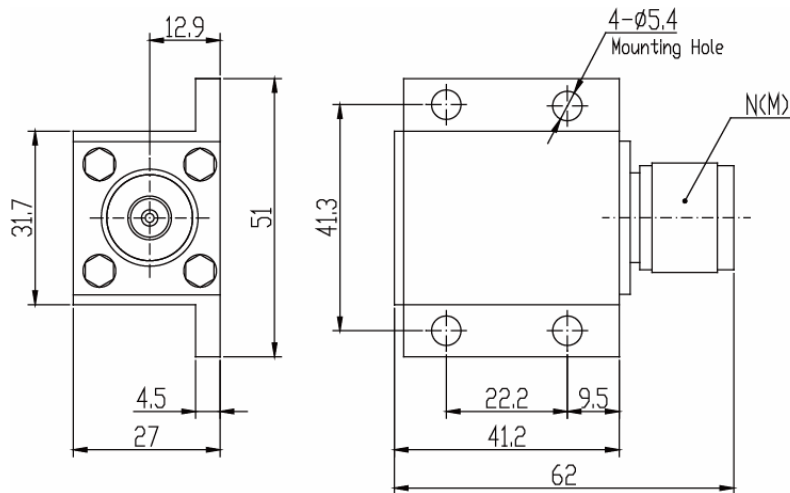
Inset terminations are used in quantitatively absorbing energy of RF and microwave system, they are commonly used as dummy loads of antenna and transmitter.

UCL-WIT50 serial wide-band Inset termination's average power from 50W-150W, frequency range from DC-18GHz and the features include wide frequency band, low VSWR, excellent capacity in anti-pulse and anti-burnout etc.

NOMINAL IMPEDANCE: 50Ω
AVERAGE POWER: 50W average to 25°C ambient temperature, derated linearly to 5W @ 125°C.
PEAK POWER: 10KW (5μs pulse width 0.5with % duty cycle)
TEMPERATURE RANGE: -55°C~+125°C
CONNECTOR TYPE: N,SMA
WEIGHT: 135g
PHYSICAL DIMENSIONS: 62×51×27mm

Model Number	Frequency Range(GHz)	Max VSWR
UCL-WIT50-3	DC-3	1.10
UCL-WIT50-6	DC-6	1.20
UCL-WIT50-8	DC-8	1.25
WNTF50-10	DC-10	1.35
WNTF50-18	DC-18	1.55

Outline Drawings



* Dimensions are given in mm and tolerance ±2%.
 ** VSWR varies according to frequency.
 *** VSWR and dimensions refer to connector type N.